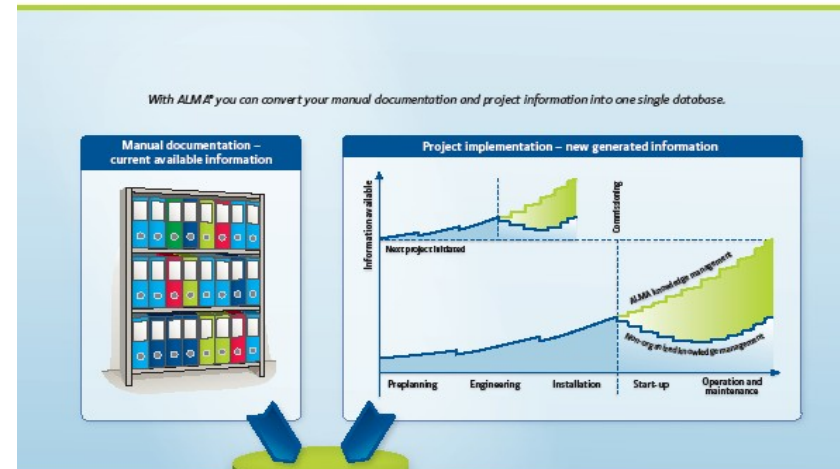




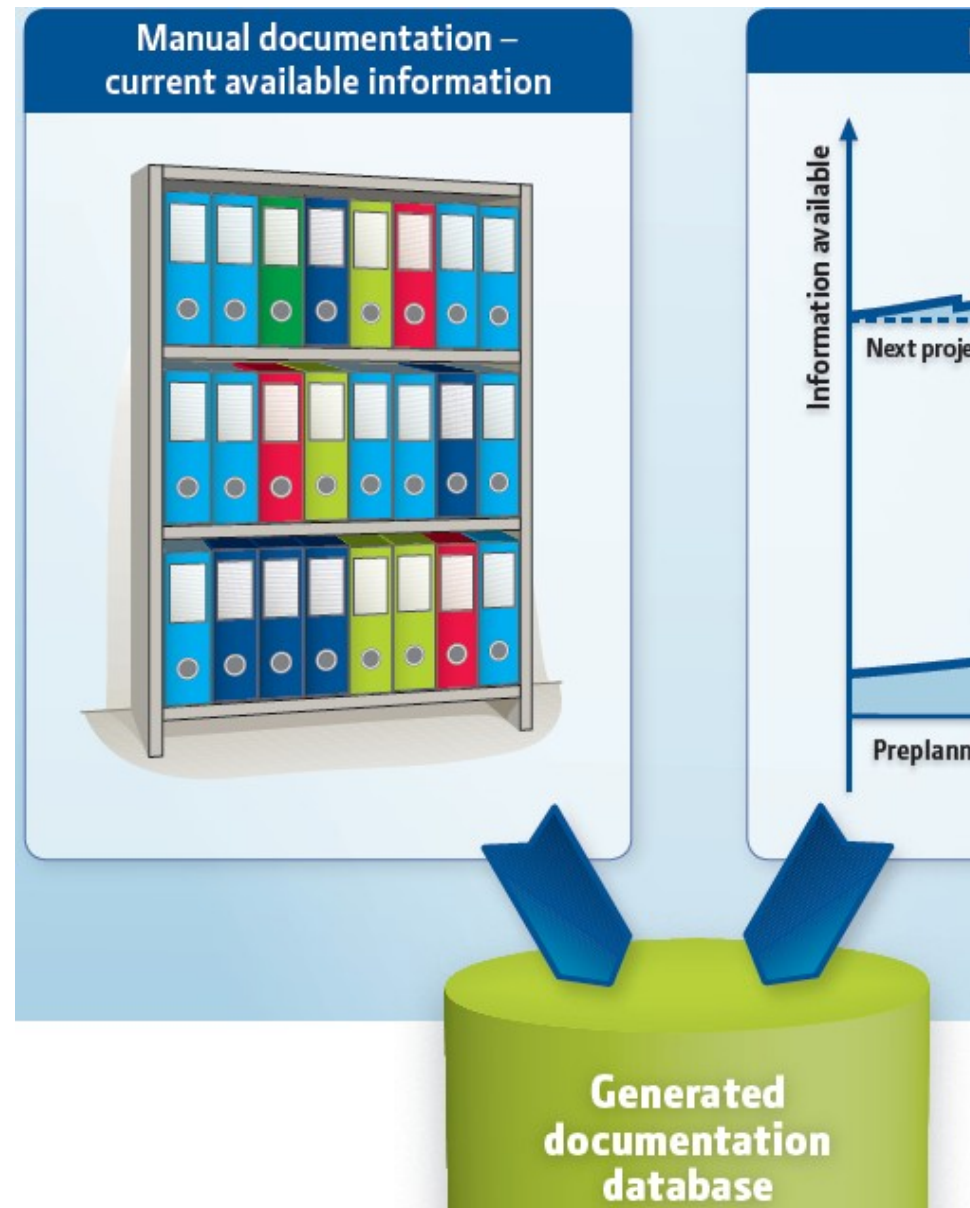
ALMA® KNOWLEDGE MANAGEMENT – TRANSFERRING KNOW-HOW

With ALMA® you can convert your manual documentation and project information into one single database.

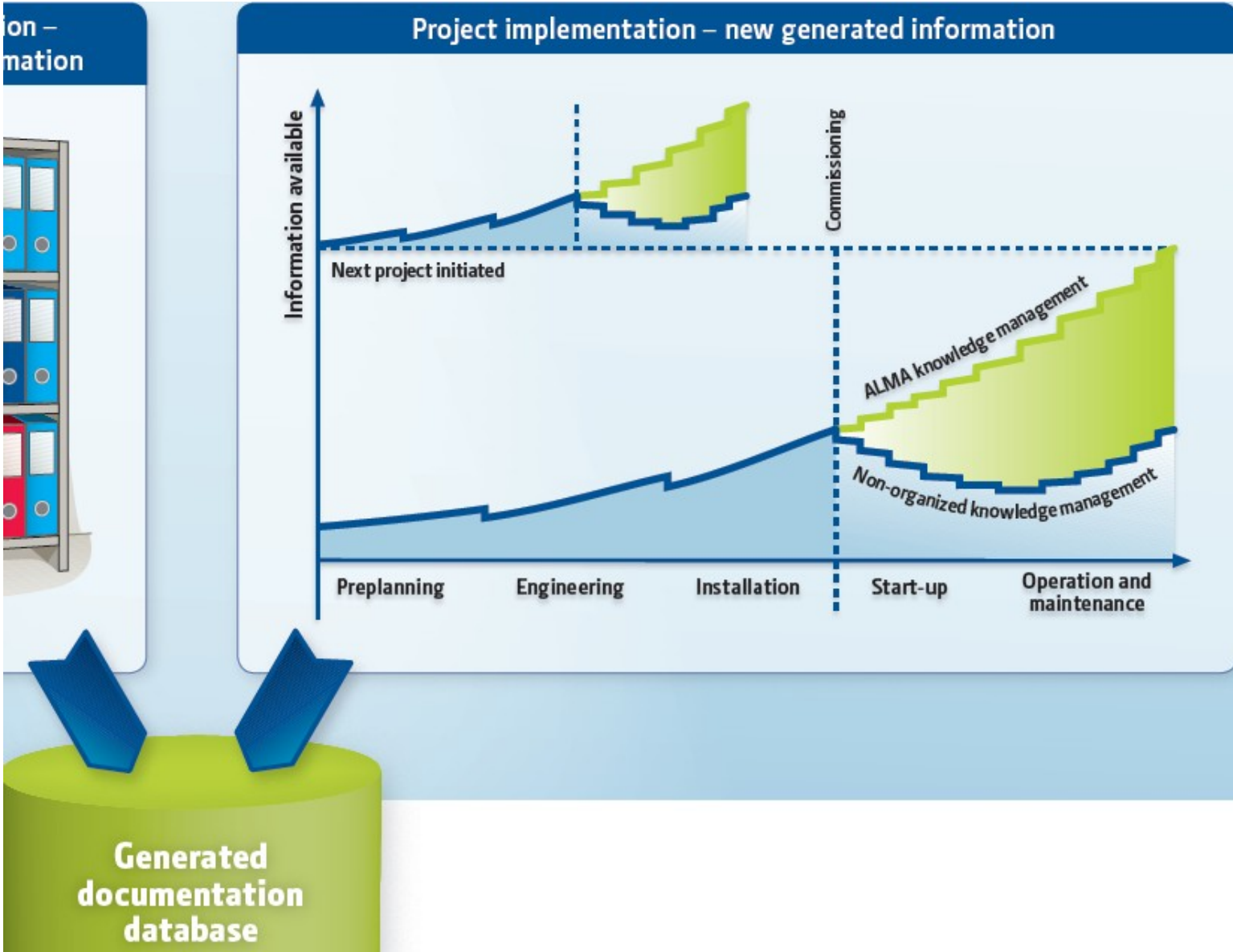
The system allows you to invite your engineering partners to engineer any changes in to your database. Activities can be maintenance or project based engineering. You can select your partner close to you or available via a remote web connection.



Updated documentation available everywhere for everyone (Doc hotel)

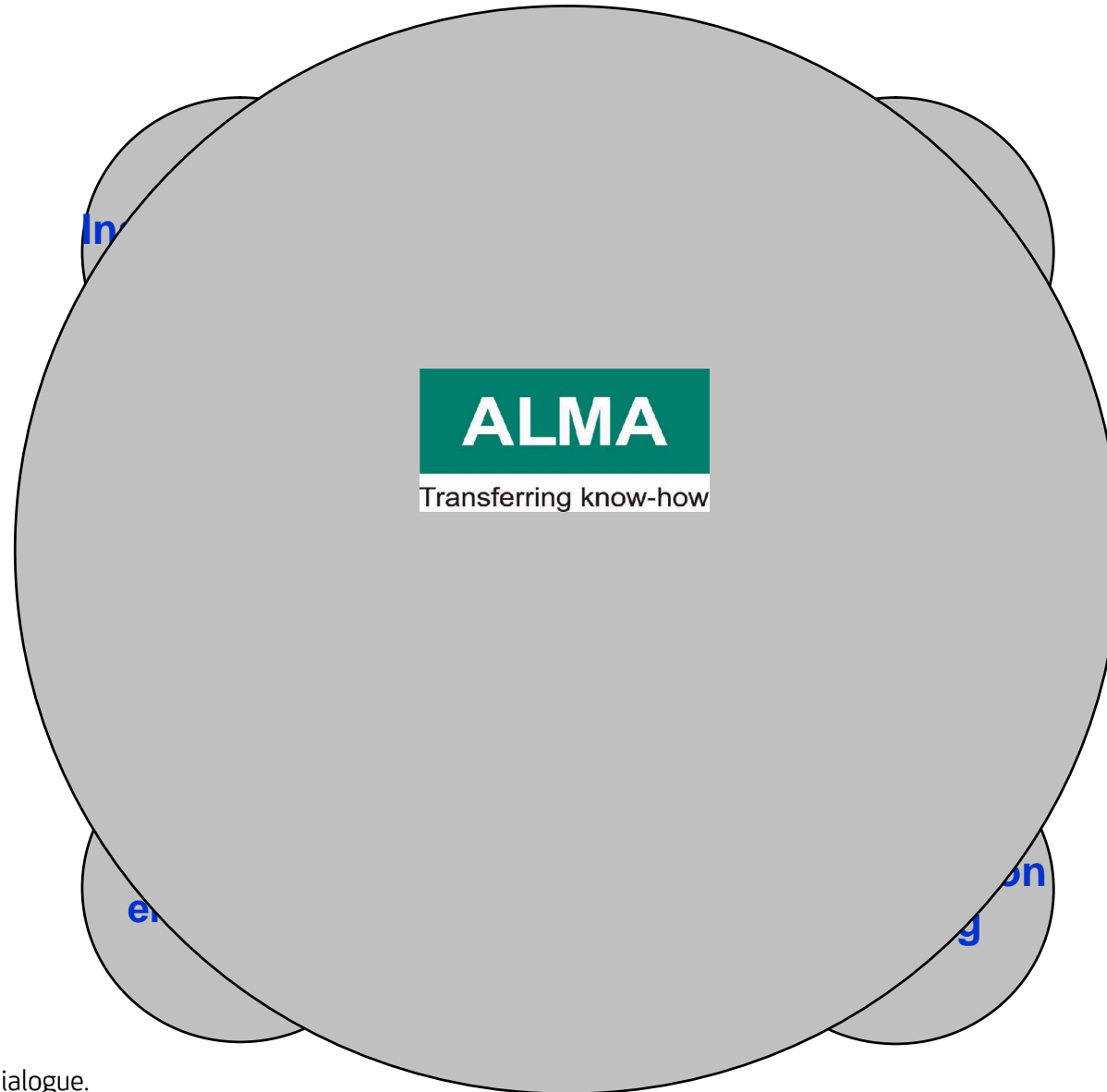


Reuse of proven solutions ("Copy with pride")

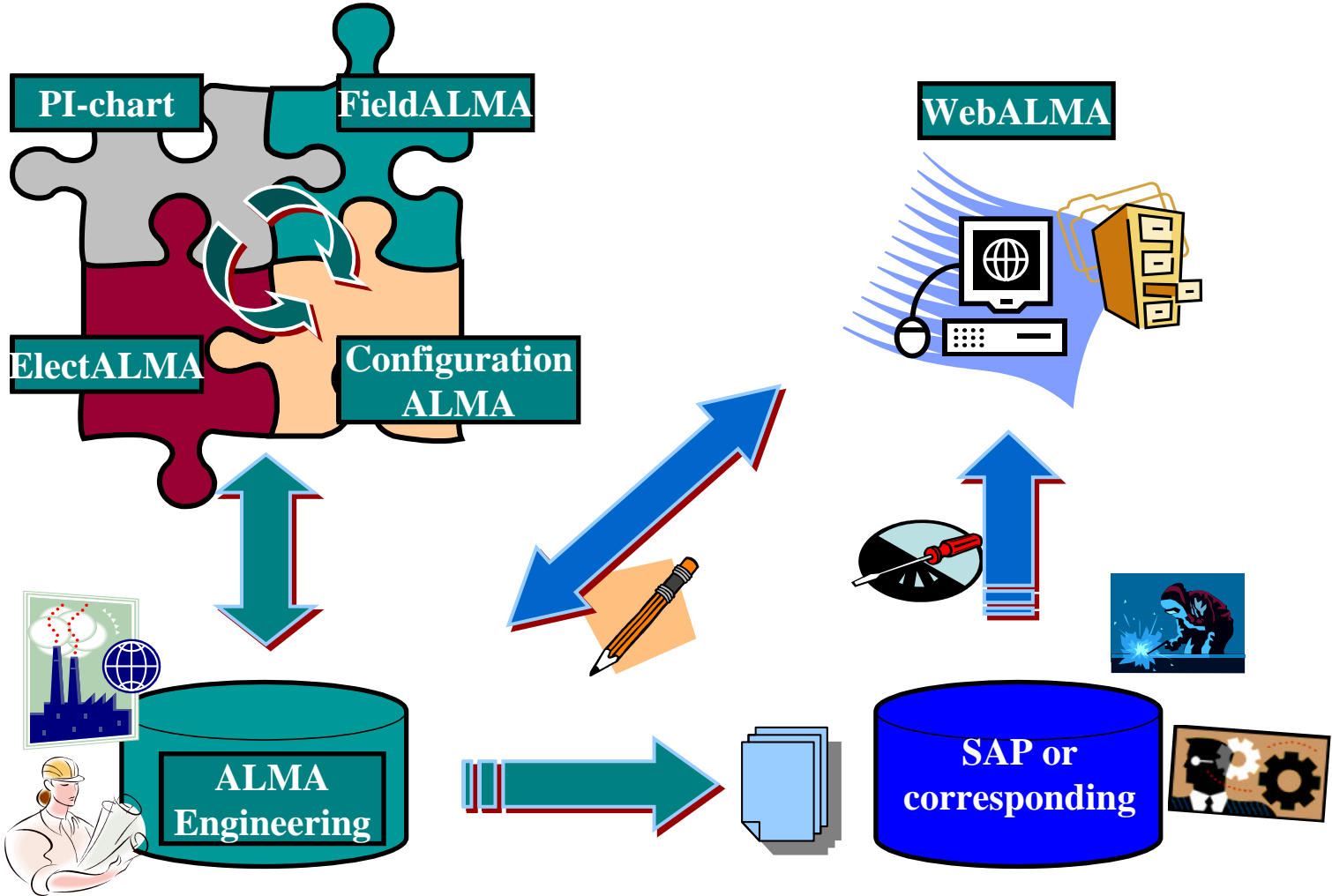


Technologies in dialogue.

All in ONE

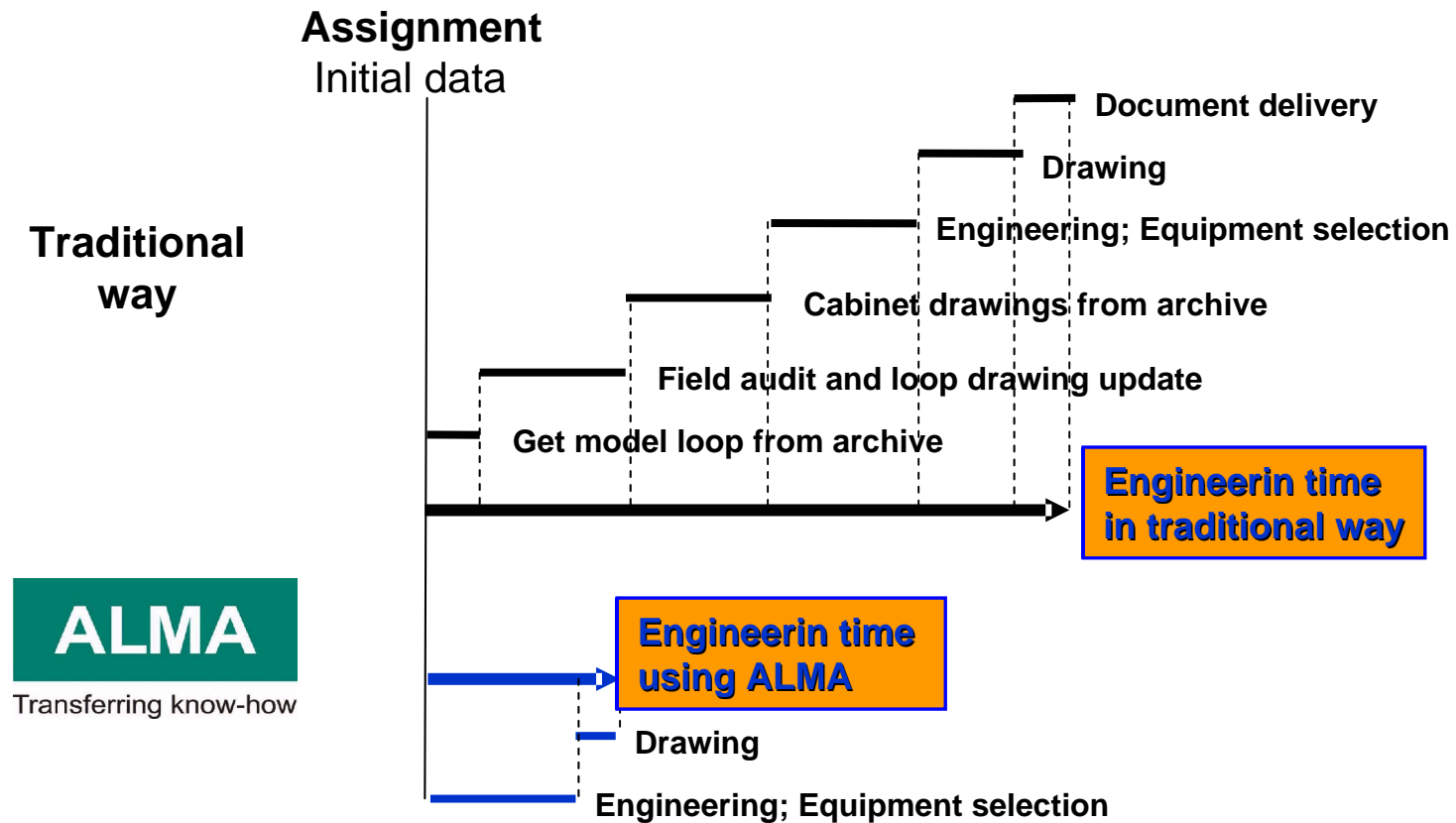


Flow of data

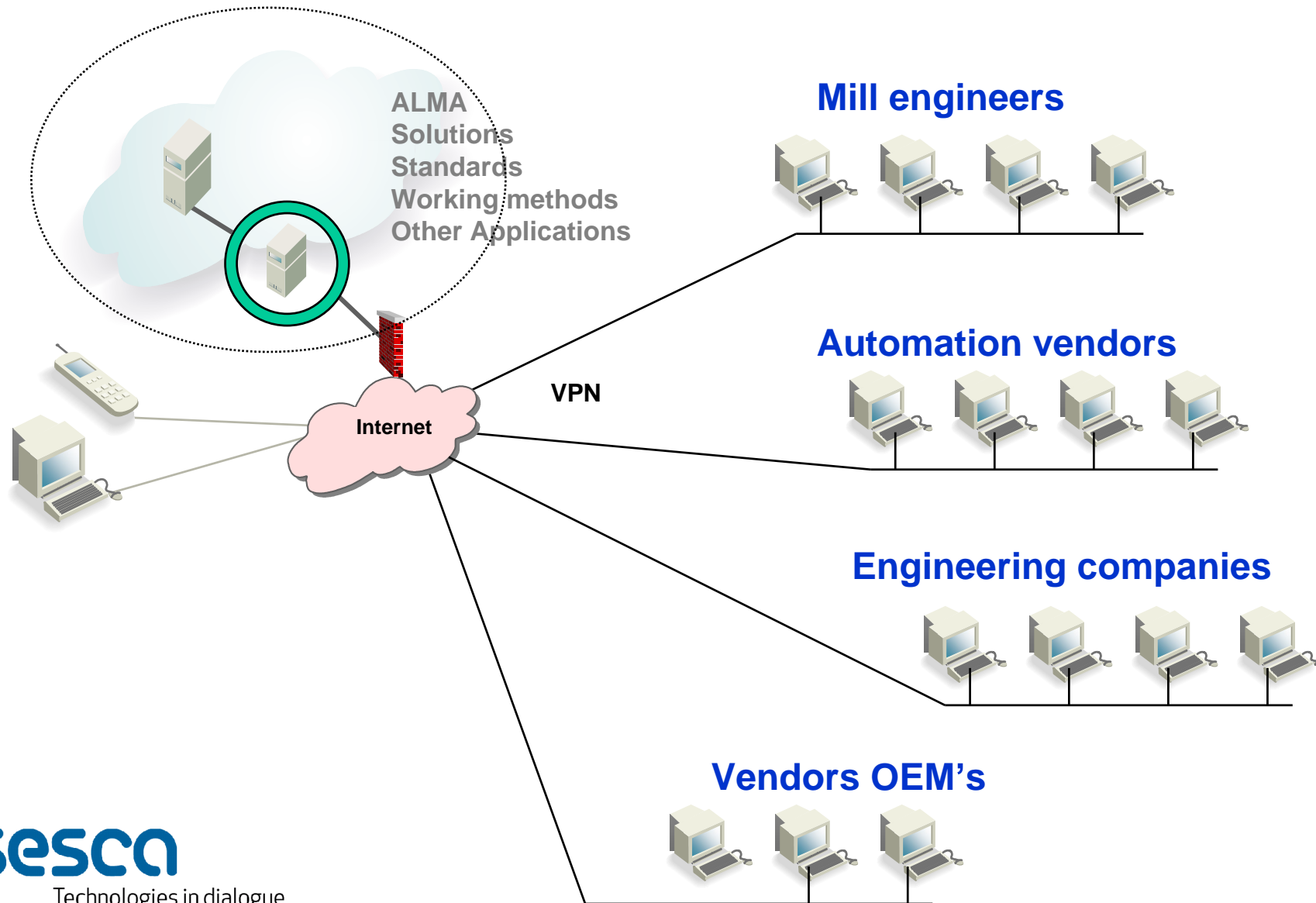


Efficiency in Engineering

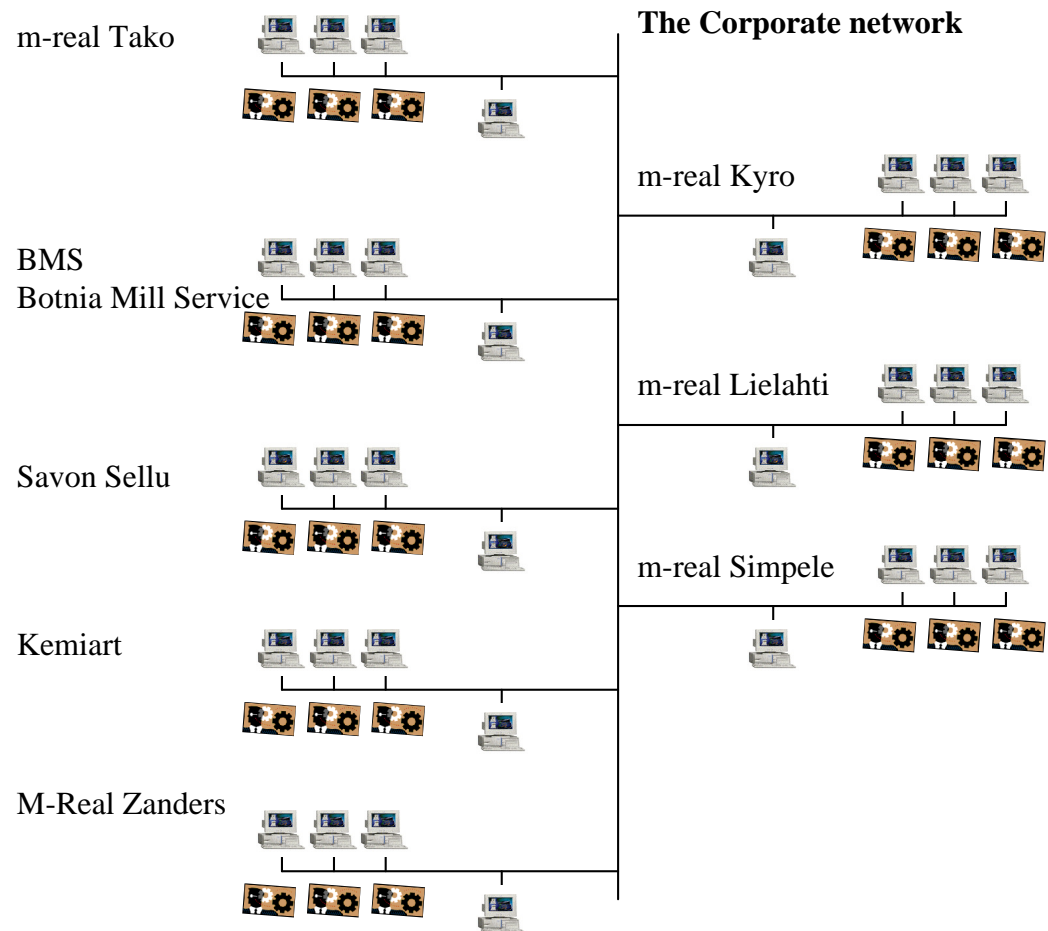
ENGINEERING of ONE LOOP



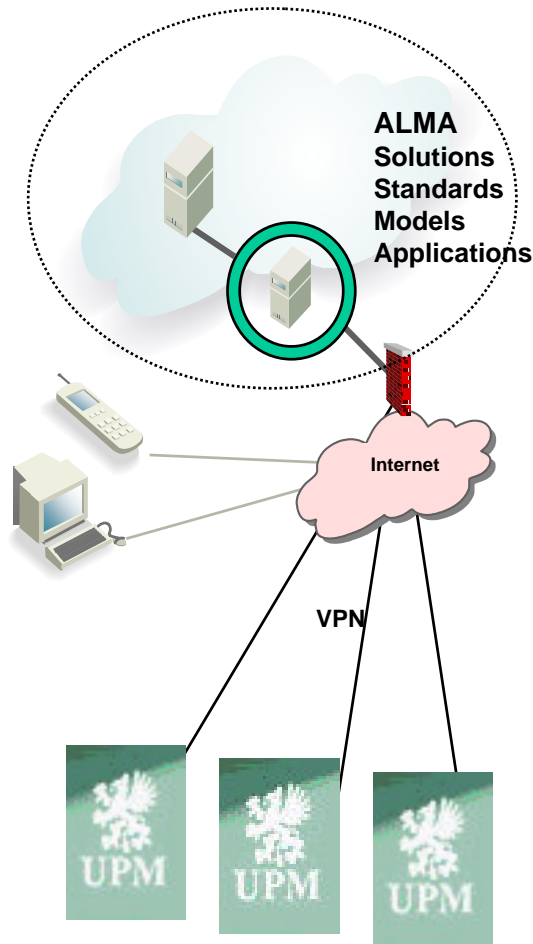
ENGINEERING DECENTRALIZATION



m-real



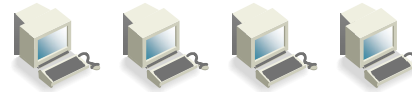
UPM Wisaforest-WISA800



Other sites



Own engineers



JAAKKO PÖYRY



Local Engineering Houses



OEM's



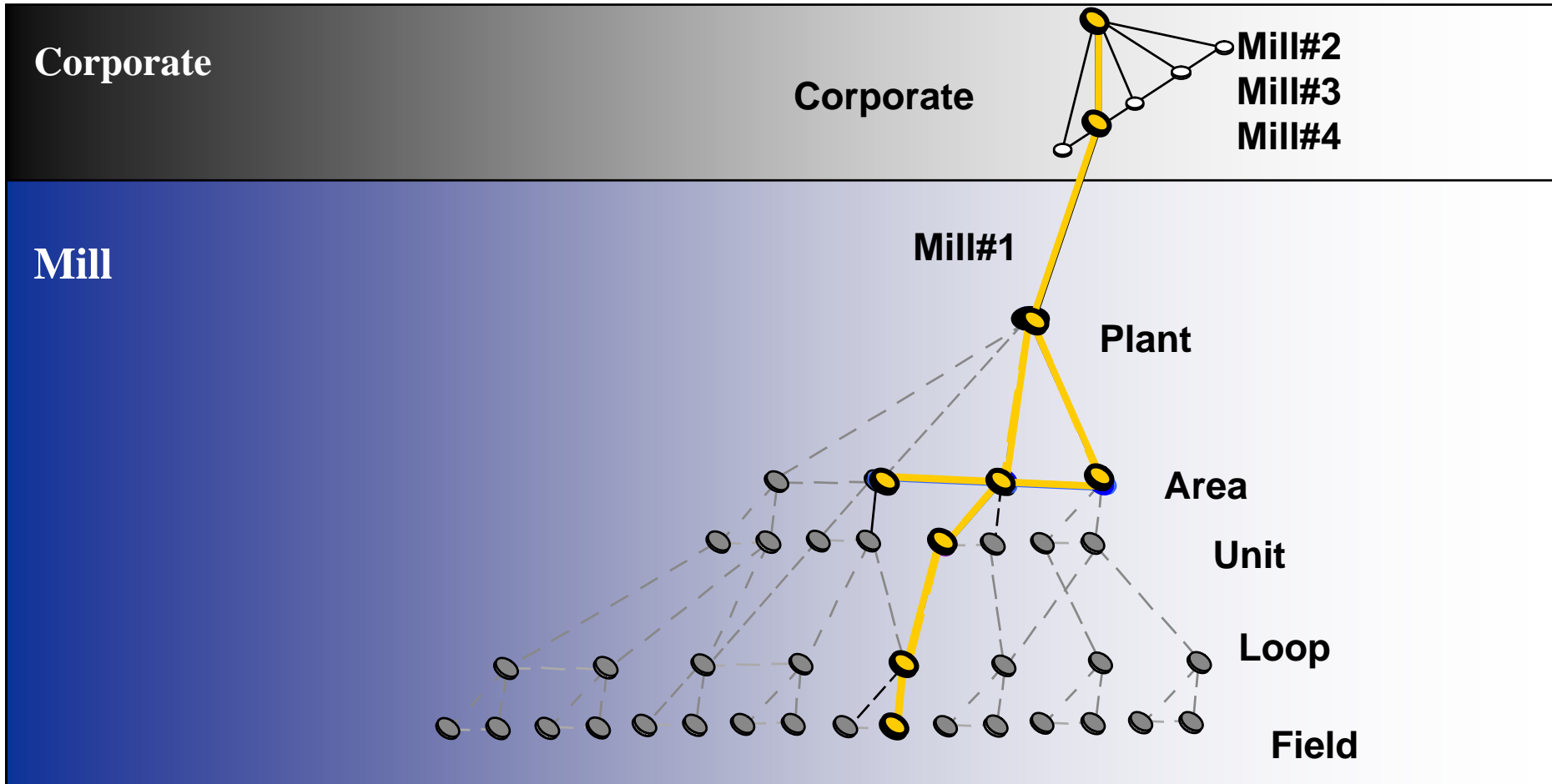
sesca

Technologies in dialogue.

SHARING THE ENGINEERING DATA

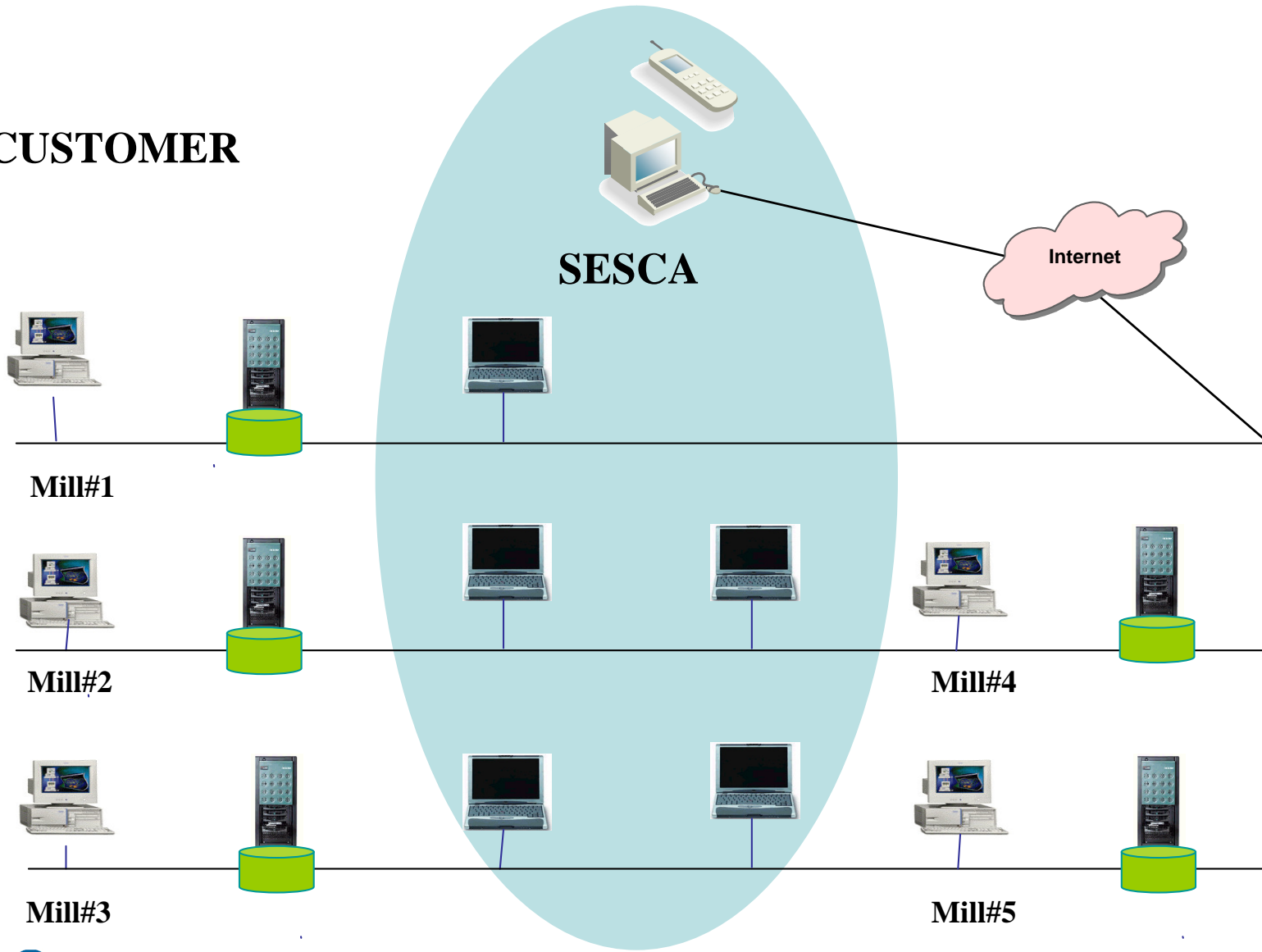
CUSTOMER

Partner



ENGINEERING SYSTEM ADMINISTRATION

CUSTOMER



ALMA productivity

- **Maintenance**
 - Solution for managing information
 - Real-time
 - Easy to use
 - Remote operations: trouble shooting, diagnostics, updates
 - Makes the existing PMMS more efficient
- **Engineering**
 - Tools for each professional himself and together
 - Creates plant standards
 - Duplicates efficiently existing solutions
 - Resources are used more efficiently
 - Remote engineering possible
 - Projects are in real-time
- **Projects**
 - Standardises the way we work
 - Follow-up is more efficient
 - Remote engineering in real-time
 - Resources are used more efficiently
 - Makes possible many ways of doing things
 - Links to other systems
- **Documentation management**
 - Electrical system
 - Information immediately everywhere 24 h a day
 - Structure integrated with the device hierarchy
 - Real-time updates
 - Web-based
 - Serves engineering, projects and maintenance
- **Production**
 - More production
 - Less quality disturbances
 - Realtime information
 - Resources are used more efficiently
- **Enterprise**
 - Way to transfer know-how
 - Common standards
 - Resources are used more efficiently
 - Flexible remote operations
 - The know-how of all experts is used globally

This document was created with Win2PDF available at <http://www.win2pdf.com>.
The unregistered version of Win2PDF is for evaluation or non-commercial use only.
This page will not be added after purchasing Win2PDF.